

BACKER TERMINAL BOXES K11A, K12A, K13A AND K15 WITH THERMOSTAT AND/ OR SAFETY TEMPERATURE LIMITER

Properties

Backer standard range of terminal boxes in stock are intended for assembly on Backer immersion/insertion heaters with threaded nipple G2" (R50, 60mm).

The terminal boxes, with a bottom part of aluminum alloy and a cover of impact resistant polycarbonate, are available with a high cover to allow assembly of control equipment options and a low cover if only electric protection should be required.

The boxes are rotatable to ensure suitable position of cable entry.

Technical specification

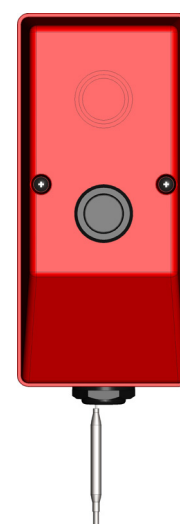
Material	Bottom mould of aluminum alloy SS EN 1706 Cover in carbonate plastic PC
Cable gland	Pr 28,3 with strain relief
Electric connection	Terminal block and earth connection
Assembly	Instructions attached
Application temperature	Max 120°C
Protection class	IP 54
Thermostat	Temperature regulator (TR) according chart below. Switching capacity 16A 400V
Temperature limiter	Safety cut-off limiter (STB) according chart below Switching capacity 20A 400V
Security	All electric connections and energizing components, must be done by a qualified electrician.

Standard assortment

Type K	Thermostat °C	Temperature limiter °C	Max power W	Article no
K11A	2-pol 30-90	3-pol 110 +0/-16	11700	1120332701
K12A	1-pol 30-90	3-pol 110 +0/-16	13800	1120332801
K13A	-	3-pol 110 +0/-16	13800	1120332901
K13A	-	3-pol 65 +0/-6	13800	1120332905
K15	2-pol 0-50	3-pol 65 +0/-6	11700	1120391801

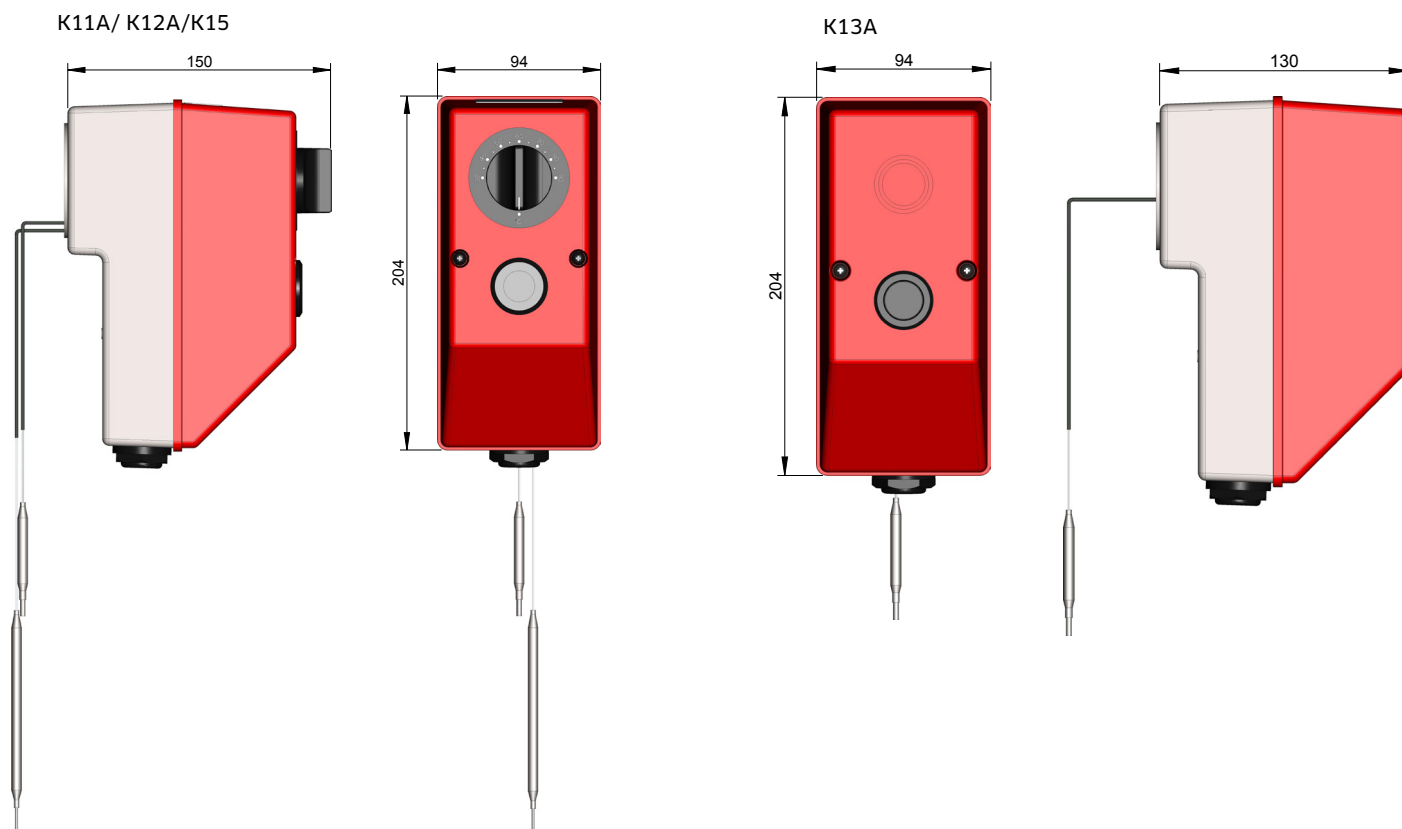


K11A/ K12A/ K15

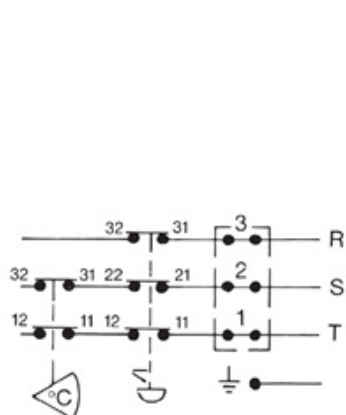


K13A

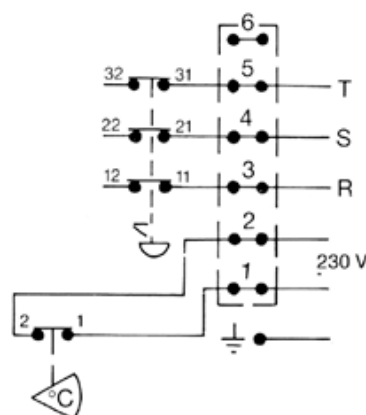
BACKER TERMINAL BOXES K11A, K12A, K13A AND K15 WITH THERMOSTAT AND/ OR SAFETY TEMPERATURE LIMITER



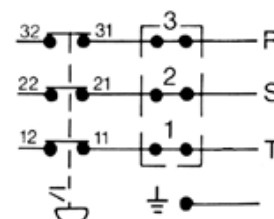
Circuit diagram/ connection alternatives*



K11A/ K15



K12A



K13A

Options

Backer immersion/insertion heaters, different options
Adaption kit for G1¼"-G½" - G2" article 1140871801